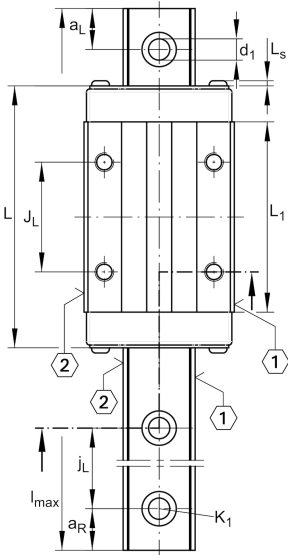
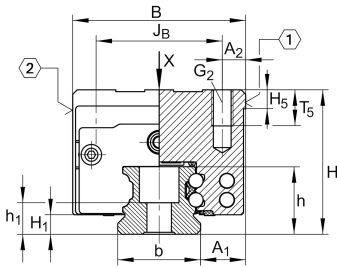
**KWVE20-B-SN**

## Recirculating ball bearing carriage

Carriages KWVE...-B-SN, narrow, low carriage, four-row

## Teknik bilgiler

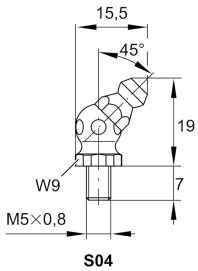
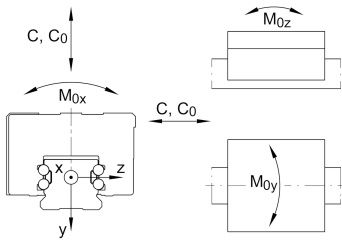
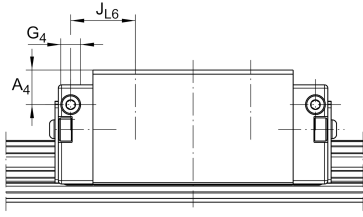


## Mevcut ürün modeliniz

Size code	20	
Version	B	
Carriage design	SN	Narrow, low carriage

## Main Dimensions &amp; Performance Data

H	27 mm	Height system
B	44 mm	Width carriage
L	71,4 mm	Overall length carriage
C	13.100 N	Dynamic load rating
C <sub>0</sub>	27.000 N	Static load rating
M <sub>0x</sub>	332 Nm	Static moment rating about X axis
M <sub>0y</sub>	240 Nm	Static moment rating about Y axis
M <sub>0z</sub>	240 Nm	Static moment rating about Z axis
≈m	0,29 kg	Ağırlık



## Mounting dimensions

A 1	12 mm	Distance from locating edge on carriage to locating edge on guideway
J B	32 mm	
b	20 mm	Width rail
A 2	6 mm	Distance from locating edge to hole
L 1	50,4 mm	
L S	1,3 mm	
J L	36 mm	
H 1	4,5 mm	Free space, system dimension
H 5	5,25 mm	
T 5	7,5 mm	Thread depth
G 2	M5	Fixing screws above (DIN ISO 4762-12.9)
G2 M A	10 Nm	Maximum tightening torque
A 3	4,7 mm	Position lubrication connector
G 3	M5	Lubrication connector
t G 3	7 mm	Maximum permissible screw depth for lubrication connectors
A 4	3,3 mm	Position lubrication connector
G 4	M3	Lubrication connector
t G 4	5,5 mm	Maximum permissible screw depth for lubrication connectors
J L6	11,4 mm	Position lubrication connector

## Additional information

VMKB_065	KWVE	Material name
----------	------	---------------