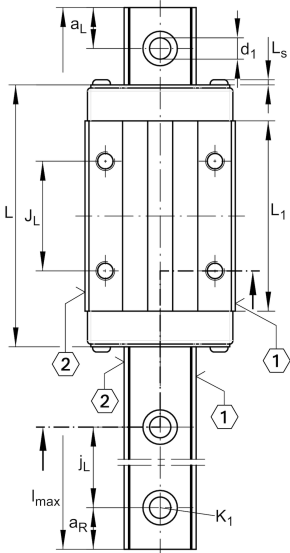
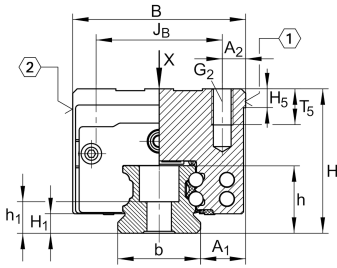
**KWVE20-B-S**

Recirculating ball bearing carriage

Carriages KWVE...-B-S, narrow carriage, four-row

Teknik bilgiler

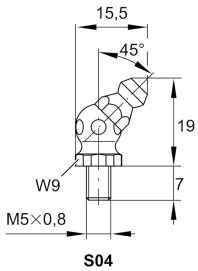
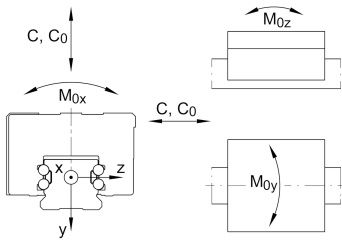
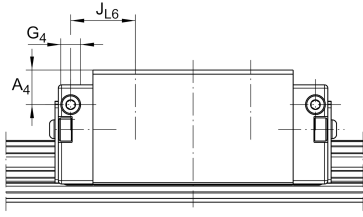


Mevcut ürün modeliniz

Size code	20	
Version	B	
Carriage design	S	Narrow Carriage

Main Dimensions & Performance Data

H	30 mm	Height system
B	44 mm	Width carriage
L	71,4 mm	Overall length carriage
C	13.100 N	Dynamic load rating
C ₀	27.000 N	Static load rating
M _{0x}	332 Nm	Static moment rating about X axis
M _{0y}	240 Nm	Static moment rating about Y axis
M _{0z}	240 Nm	Static moment rating about Z axis
≈m	0,34 kg	Ağırlık



Mounting dimensions

A 1	12 mm	Distance from locating edge on carriage to locating edge on guideway
J B	32 mm	
b	20 mm	Width rail
A 2	6 mm	Distance from locating edge to hole
L 1	50,4 mm	
L S	1,3 mm	
J L	36 mm	
H 1	4,5 mm	Free space, system dimension
H 5	5,25 mm	
T 5	7,5 mm	Thread depth
G 2	M5	Fixing screws above (DIN ISO 4762-12.9)
G2 M A	10 Nm	Maximum tightening torque
A 3	7,7 mm	Position lubrication connector
G 3	M5	Lubrication connector
t G 3	7 mm	Maximum permissible screw depth for lubrication connectors
A 4	4,6 mm	Position lubrication connector
G 4	M5	Lubrication connector
t G 4	5,5 mm	Maximum permissible screw depth for lubrication connectors
J L6	11,4 mm	Position lubrication connector

Additional information

VMKB_065	KWVE	Material name
----------	------	---------------