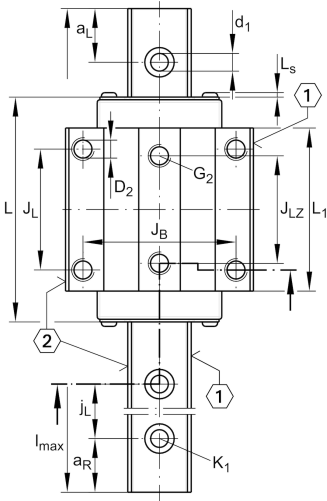
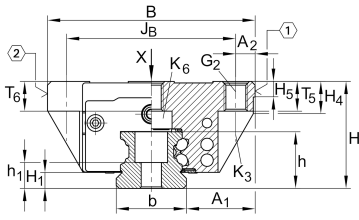
**KWVE20-B-L**

## Recirculating ball bearing carriage

Carriages KWVE...-B-L, long carriage, four-row, full complement ball set

## Teknik bilgiler

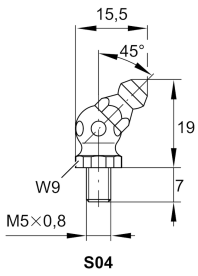
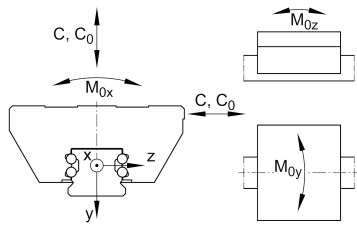
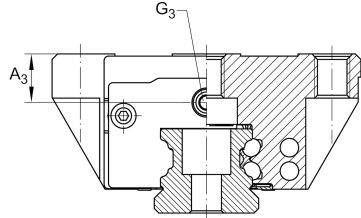
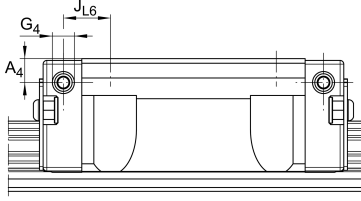


## Mevcut ürün modeliniz

Size code	20
Version	B
Carriage design	L Long carriage

## Main Dimensions &amp; Performance Data

H	30 mm	Height system
B	63 mm	Width carriage
L	88,9 mm	Overall length carriage
C	16.200 N	Dynamic load rating
C <sub>0</sub>	36.500 N	Static load rating
M <sub>0x</sub>	452 Nm	Static moment rating about X axis
M <sub>0y</sub>	430 Nm	Static moment rating about Y axis
M <sub>0z</sub>	430 Nm	Static moment rating about Z axis
≈m	0,59 kg	Ağırlık



### Mounting dimensions

A <sub>1</sub>	21,5 mm	Distance from locating edge on carriage to locating edge on guideway
J <sub>B</sub>	53 mm	
b	20 mm	Width rail
A <sub>2</sub>	5 mm	Distance from locating edge to hole
L <sub>1</sub>	67,9 mm	
L <sub>S</sub>	1,3 mm	
J <sub>L</sub>	40 mm	
J <sub>LZ</sub>	35 mm	
H <sub>1</sub>	4,5 mm	Free space, system dimension
H <sub>4</sub>	11 mm	
H <sub>5</sub>	5,25 mm	
T <sub>5</sub>	10 mm	Thread depth
T <sub>6</sub>	7,5 mm	
G <sub>2</sub>	M6	Fixing screws above (DIN ISO 4762-12.9)
G <sub>2</sub> M <sub>A</sub>	10 Nm	Maximum tightening torque
K <sub>3</sub>	M5	Fixing screws below (DIN ISO 4762-12.9)
K <sub>3</sub> M <sub>A</sub>	10 Nm	Maximum tightening torque
K <sub>6</sub>	M5	Fixing screws below (DIN ISO 4762-12.9)
K <sub>6</sub> M <sub>A</sub>	10 Nm	Maximum tightening torque
D <sub>2</sub>	5,5 mm	
A <sub>3</sub>	7,7 mm	Position lubrication connector
G <sub>3</sub>	M5	Lubrication connector
t G <sub>3</sub>	7 mm	Maximum permissible screw depth for lubrication connectors
A <sub>4</sub>	4,6 mm	Position lubrication connector
G <sub>4</sub>	M5	Lubrication connector
t G <sub>4</sub>	5,5 mm	Maximum permissible screw depth for lubrication connectors
J <sub>L6</sub>	18,9 mm	Position lubrication connector



Ürün ayrıntılarını medias'ta görüntüleyin

07.03.2026, 03:16:16 TRT

SCHAEFFLER

### Additional information

---

VMKB_065	KWVE	Material name
----------	------	---------------