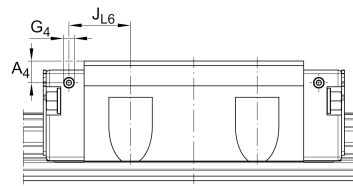
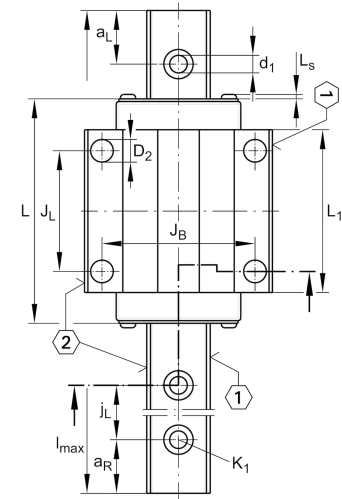
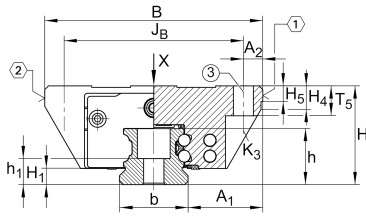
**KWVE20-B-E** [↗](#)

Recirculating ball bearing carriage

Carriages KWVE...-B-E, standard carriage, four-row, full complement, expanded type

Teknik bilgiler

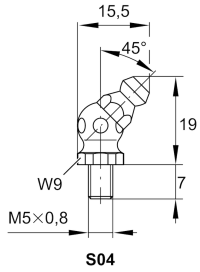
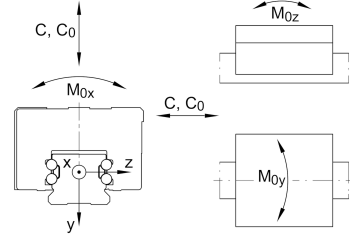
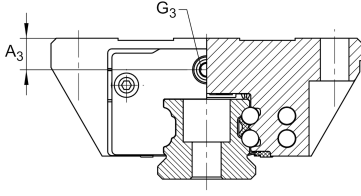


Mevcut ürün modeliniz

Size code	20	
Version	B	
Carriage design	E	Expanded design (carriage without screw threads)

Main Dimensions & Performance Data

H	28 mm	Height system
B	59 mm	Width carriage
L	71,4 mm	Overall length carriage
C	13.100 N	Dynamic load rating
C ₀	27.000 N	Static load rating
M _{0x}	332 Nm	Static moment rating about X axis
M _{0y}	240 Nm	Static moment rating about Y axis
M _{0z}	240 Nm	Static moment rating about Z axis
≈m	0,36 kg	Ağırlık



Mounting dimensions

A ₁	19,5 mm	Distance from locating edge on carriage to locating edge on guideway
J _B	49 mm	
b	20 mm	Width rail
A ₂	5 mm	Distance from locating edge to hole
L ₁	50,4 mm	
L _S	1,3 mm	
J _L	32 mm	
H ₁	4,5 mm	Free space, system dimension
H ₄	11,2 mm	
H ₅	5,25 mm	
T ₅	9 mm	Thread depth
K ₃	M5	Fixing screws below (DIN ISO 4762-12.9)
K _{3 M_A}	10 Nm	Maximum tightening torque
D ₂	5,5 mm	
A ₃	6 mm	Position lubrication connector
G ₃	M5	Lubrication connector
t _{G₃}	7 mm	Maximum permissible screw depth for lubrication connectors
A ₄	4,3 mm	Position lubrication connector
G ₄	M3	Lubrication connector
t _{G₄}	5,5 mm	Maximum permissible screw depth for lubrication connectors
J _{L6}	13,4 mm	Position lubrication connector

Additional information

VMKB_065	KWVE	Material name
----------	------	---------------