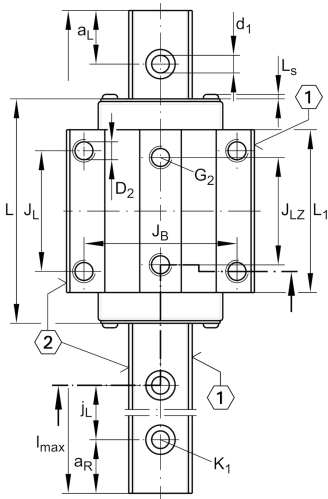
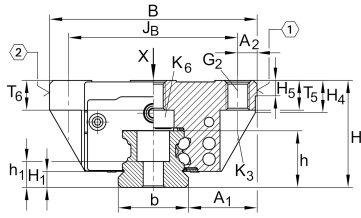
**KWVE15-B**

Recirculating ball bearing carriage

## Teknik bilgiler



## Mevcut ürün modeliniz

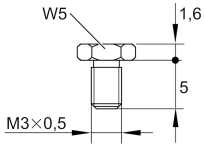
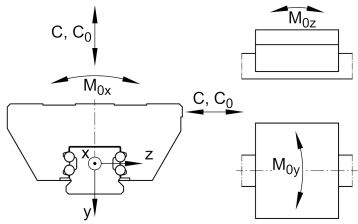
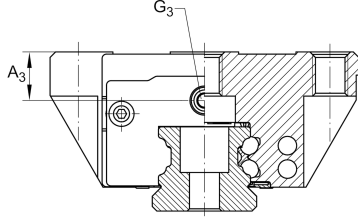
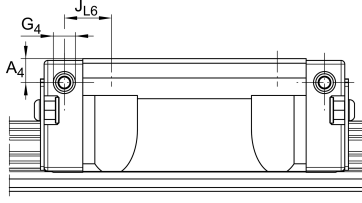
Size code	15	
Version	B	
Carriage design	Standard	Standard carriage

## Main Dimensions &amp; Performance Data

H	24 mm	Height system
B	47 mm	Width carriage
L	61,2 mm	Overall length carriage
C	7.200 N	Dynamic load rating
C <sub>0</sub>	14.500 N	Static load rating
M <sub>0x</sub>	150 Nm	Static moment rating about X axis
M <sub>0y</sub>	100 Nm	Static moment rating about Y axis
M <sub>0z</sub>	100 Nm	Static moment rating about Z axis
≈m	0,2 kg	Ağırlık



## Mounting dimensions



S16

A 1	16 mm	Distance from locating edge on carriage to locating edge on guideway
J B	38 mm	
b	15 mm	Width rail
A 2	4,5 mm	Distance from locating edge to hole
L 1	39,8 mm	
L S	1,3 mm	
J L	30 mm	
J LZ	26 mm	
H 1	4,3 mm	Free space, system dimension
H 4	7,6 mm	
H 5	4,75 mm	
T 5	7 mm	Thread depth
T 6	5,8 mm	
G 2	M5	Fixing screws above (DIN ISO 4762-12.9)
G2 M A	5,8 Nm	Maximum tightening torque
K 3	M4	Fixing screws below (DIN ISO 4762-12.9)
K3 M A	5 Nm	Maximum tightening torque
K 6	M4	Fixing screws below (DIN 7984-8.8)
K6 M A	2 Nm	Maximum tightening torque
D 2	4,5 mm	
A 3	4,3 mm	Position lubrication connector
G 3	M3	Lubrication connector
t G 3	5,5 mm	Maximum permissible screw depth for lubrication connectors
A 4	3,2 mm	Position lubrication connector
G 4	M3	Lubrication connector
t G 4	5,5 mm	Maximum permissible screw depth for lubrication connectors
J L6	9,1 mm	Position lubrication connector



Ürün ayrıntılarını medias'ta görüntüleyin

07.03.2026, 03:41:17 TRT

SCHAEFFLER

### Additional information

---

VMKB\_065

KWVE

Material name