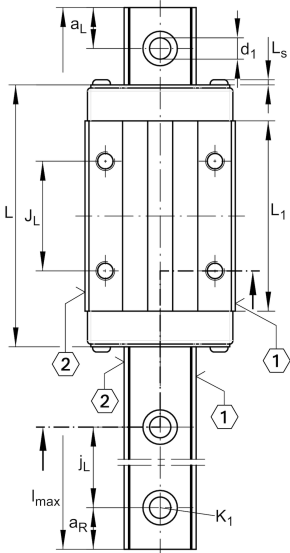
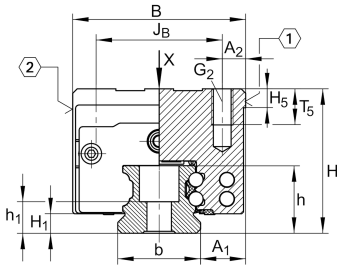
**KWVE15-B-S**

Recirculating ball bearing carriage

Carriages KWVE...-B-S, narrow carriage, four-row

Teknik bilgiler

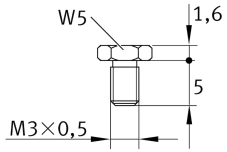
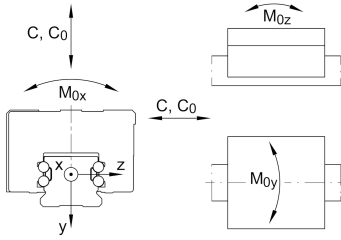
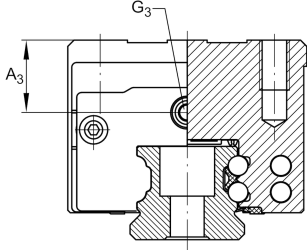
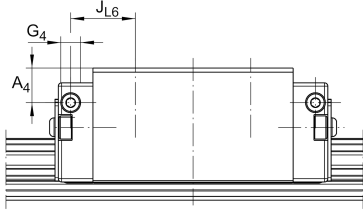


Mevcut ürün modeliniz

Size code	15	
Version	B	
Carriage design	S	Narrow Carriage

Main Dimensions & Performance Data

H	24 mm	Height system
B	34 mm	Width carriage
L	61,2 mm	Overall length carriage
C	7.200 N	Dynamic load rating
C ₀	14.500 N	Static load rating
M _{0x}	150 Nm	Static moment rating about X axis
M _{0y}	100 Nm	Static moment rating about Y axis
M _{0z}	100 Nm	Static moment rating about Z axis
≈m	0,16 kg	Ağırlık



S16

Mounting dimensions

A 1	9,5 mm	Distance from locating edge on carriage to locating edge on guideway
J B	26 mm	
b	15 mm	Width rail
A 2	4 mm	Distance from locating edge to hole
L 1	39,8 mm	
L S	1,3 mm	
J L	26 mm	
H 1	4,3 mm	Free space, system dimension
H 5	4,75 mm	
T 5	6 mm	Thread depth
G 2	M4	Fixing screws above (DIN ISO 4762-12.9)
G2 M A	5 Nm	Maximum tightening torque
A 3	4,3 mm	Position lubrication connector
G 3	M3	Lubrication connector
t G 3	5,5 mm	Maximum permissible screw depth for lubrication connectors
A 4	3,2 mm	Position lubrication connector
G 4	M3	Lubrication connector
t G 4	5,5 mm	Maximum permissible screw depth for lubrication connectors
J L6	11,1 mm	Position lubrication connector

Additional information

VMKB_065	KWVE	Material name
----------	------	---------------