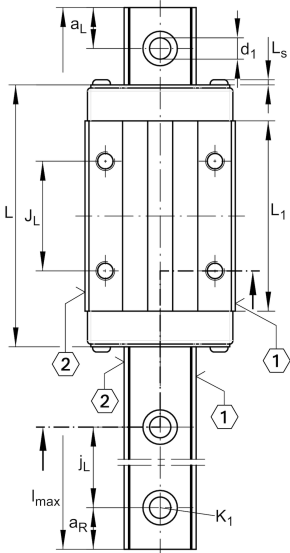
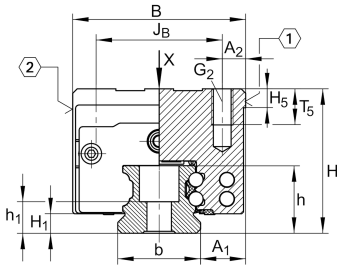
**KWVE15-B-H**

Recirculating ball bearing carriage

Carriages KWVE...-B-H, high, narrow carriage, four-row

Teknik bilgiler

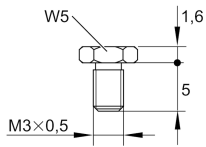
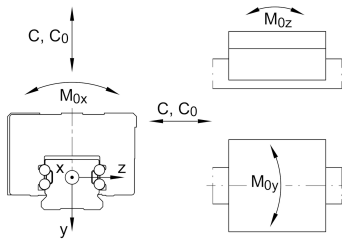
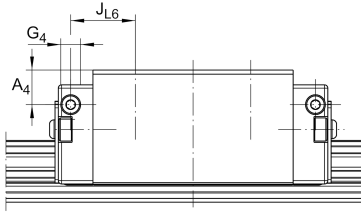


Mevcut ürün modeliniz

Size code	15	
Version	B	
Carriage design	H	High carriage

Main Dimensions & Performance Data

H	28 mm	Height system
B	34 mm	Width carriage
L	61,2 mm	Overall length carriage
C	7.200 N	Dynamic load rating
C ₀	14.500 N	Static load rating
M _{0x}	150 Nm	Static moment rating about X axis
M _{0y}	100 Nm	Static moment rating about Y axis
M _{0z}	100 Nm	Static moment rating about Z axis
≈m	0,2 kg	Ağırlık



S16

Mounting dimensions

A ₁	9,5 mm	Distance from locating edge on carriage to locating edge on guideway
J _B	26 mm	
b	15 mm	Width rail
A ₂	4 mm	Distance from locating edge to hole
L ₁	39,8 mm	
L _S	1,3 mm	
J _L	26 mm	
H ₁	4,3 mm	Free space, system dimension
H ₅	4,75 mm	
T ₅	6 mm	Thread depth
G ₂	M4	Fixing screws above (DIN ISO 4762-12.9)
G _{2 M_A}	5 Nm	Maximum tightening torque
A ₃	8,3 mm	Position lubrication connector
G ₃	M3	Lubrication connector
t _{G₃}	5,5 mm	Maximum permissible screw depth for lubrication connectors
A ₄	7,2 mm	Position lubrication connector
G ₄	M3	Lubrication connector
t _{G₄}	5,5 mm	Maximum permissible screw depth for lubrication connectors
J _{L6}	11,1 mm	Position lubrication connector

Additional information

VMKB_065 KWVE Material name