**KWVE15-B-ESC**

## Recirculating ball bearing carriage

Carriages KWVE...-B-ESC, narrow, short carriage, four-row, full complement ball set

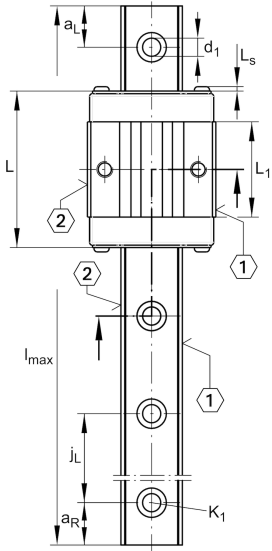
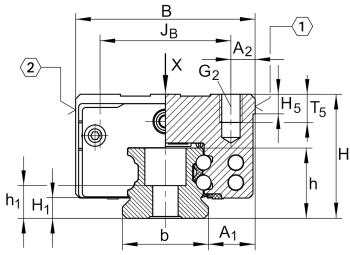
## Teknik bilgiler

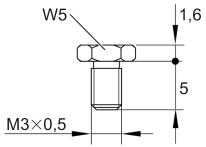
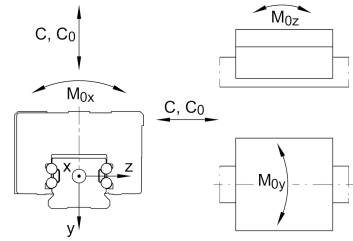
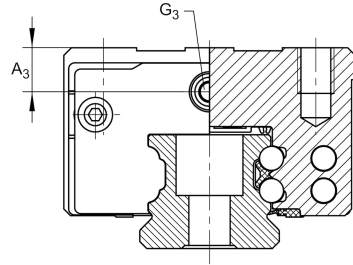
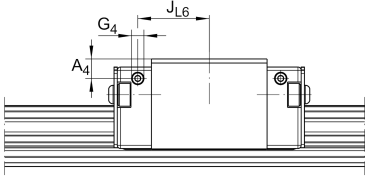
## Mevcut ürün modeliniz

Size code	15	
Version	B	
Carriage design	ESC	Expanded design, short, narrow carriage

## Main Dimensions &amp; Performance Data

H	24 mm	Height system
B	34 mm	Width carriage
L	44,5 mm	Overall length carriage
C	4.900 N	Dynamic load rating
C <sub>0</sub>	8.300 N	Static load rating
M <sub>0x</sub>	86 Nm	Static moment rating about X axis
M <sub>0y</sub>	35 Nm	Static moment rating about Y axis
M <sub>0z</sub>	35 Nm	Static moment rating about Z axis
≈m	0,12 kg	Ağırlık





S16

## Mounting dimensions

A <sub>1</sub>	9,5 mm	Distance from locating edge on carriage to locating edge on guideway
J <sub>B</sub>	26 mm	
b	15 mm	Width rail
A <sub>2</sub>	4 mm	Distance from locating edge to hole
L <sub>1</sub>	23,1 mm	
L <sub>S</sub>	1,3 mm	
H <sub>1</sub>	4,3 mm	Free space, system dimension
H <sub>5</sub>	4,75 mm	
T <sub>5</sub>	6 mm	Thread depth
G <sub>2</sub>	M4	Fixing screws above (DIN ISO 4762-12.9)
G <sub>2</sub> M <sub>A</sub>	5 Nm	Maximum tightening torque
A <sub>3</sub>	4,3 mm	Position lubrication connector
G <sub>3</sub>	M3	Lubrication connector
t G <sub>3</sub>	5,5 mm	Maximum permissible screw depth for lubrication connectors
A <sub>4</sub>	3,2 mm	Position lubrication connector
G <sub>4</sub>	M3	Lubrication connector
t G <sub>4</sub>	5,5 mm	Maximum permissible screw depth for lubrication connectors
J <sub>L6</sub>	15,8 mm	Position lubrication connector

## Additional information

VMKB_065	KWVE	Material name
----------	------	---------------